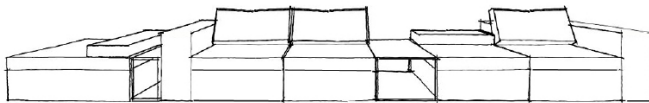


# grato sofa system

by V. Vasilev





### **Grafo sofa system**

designer Victor Vasilev

Grafo comes from the designer's desire to endow a soft object with the "identifying mark" of the iconic products of the MDF Italia collection.

A pure, straightforward graphic quality - part of the company's philosophy - has been the source of inspiration for the project.

With no daring pursuit at any cost, this modular system mixing upholstered and rigid elements, can be incorporated into any setting, from home to community areas.



••• all backrest elements are equipped with a special "folding" system, enabling the height of the backrest to be adjusted, which subsequently modifies the seat depth. In this way, the system can meet any needs and comfort requirements.

 H60/85






H60/85 L300 D100







••• all sectionals can be used individually or grouped together, as no exclusively end or intermediate elements are necessary; each sectional, indeed, can be used with simplicity and creativity to compose the sofa.

 H60/85 L250 D200





••• the contrasting graphic stitching that distinguishes and identifies the Grafo collection is the mark on all the upholstered sectionals and cushions.


Available in white, medium grey and anthracite, the stitching can be freely selected by the customer.







••• the special and easy coupling device system enables unlimited layouts to be figured out, from compact to linear or corner compositions, large islands, chaise longues and many others.

 H60/85 L225 D100



H60/85 L375 D350



H60/85 L400 D300





••• living area with a Grafo sofa in brown leather, cushions in Dune and William fabric, Minima 3.0 system in graphite grey lacquer, Flow pouf, K Table and Mia armchair.

 H60/85 L300 D125





H60/85 L325 D200







●●● the collection is made up of eight sectionals that together with three complementary coffee tables allow endless solutions to be developed in accordance to the free, creative interpretation of the customer.

Coffee table modules: made of a loadbearing structural MD- fibreboard panel and aluminium in thickness 15mm, in matt white or black Fenix®.

Legs are made of cast aluminium with section 15x15mm, powder-coated in matt white or graphite.





●●● all backrest elements are equipped with a special "folding" system, enabling the height of the backrest to be adjusted, which subsequently modifies the seat depth. In this way the system can meet any needs and comfort requirements.

For a full seat comfort, an upholstered sectional must be matched with a "backrest cushion" (40x75cm or 40x100cm), the armrest cushion (25x75, 25x100cm) can be used with the sectionals with no armrest or backrest, as well as with coffee table modules.

To complete the sofa visually and to add extra comfort, additional cushions (50x50cm and 60x60cm) can be included as smooth, stylistically decorative elements.

 H60/85 L300 D300





UPHOLSTERED ELEMENT L75/100/125 D100 H60/85  
BACKREST CUSHION L75/100 D7 H40  
ARMREST CUSHION L75/100 D10 H25  
ADDITIONAL CUSHIONS L50 D10 H50, L60 D10 H60  
COFFEE TABLE L24.5/49.2/98.5 W98.5 H40



H60/85 D100 L300



H60/85 D100 L275



H60/85 D100 L300



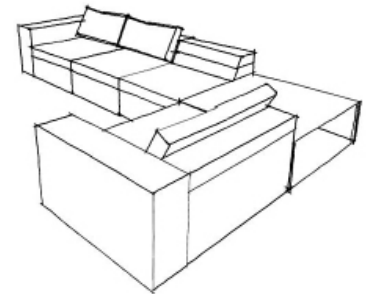
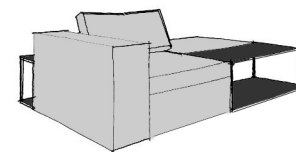
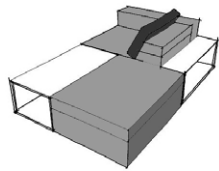
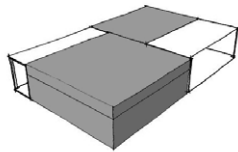
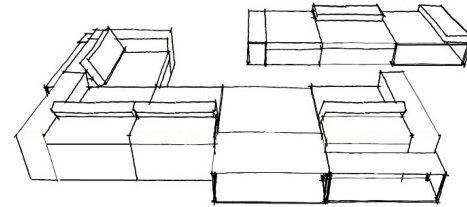
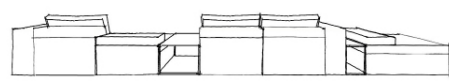
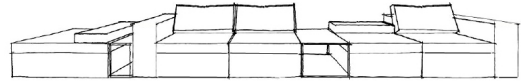
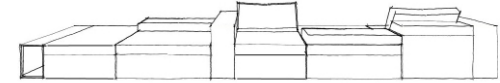
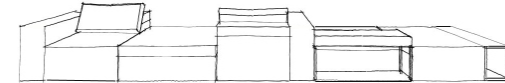
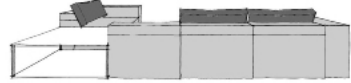
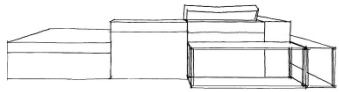
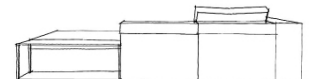
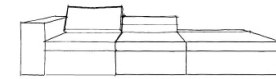
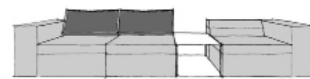
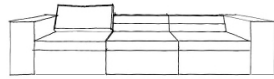
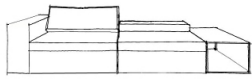
H60/85 D175 L300



H60/85 D225 L300



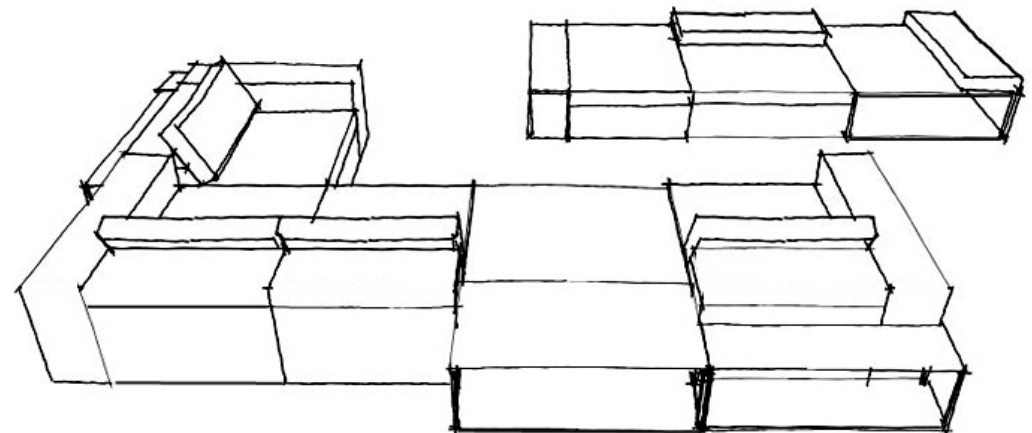
H60/85 D225 L300





••• the fabric or leather covering every part of the sofa is manufactured to enhance the softness of the sofa. In addition, the covers are completely removable.

Upon discretion of MDF Italia, all leather elements can have one or more stitched seams, depending on their size. An extra cover can be purchased for both the upholstered sectionals and the cushions.





041 (R356)



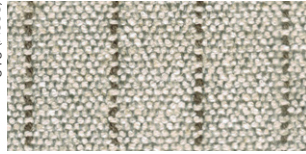
020 (R355)



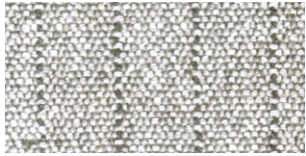
011 (R354)



010 (R353)

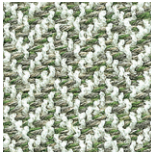


003 (R352)

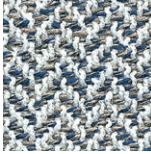


●●● FRANK\*

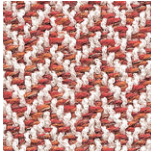
011 (R317)



010 (R316)



007 (R315)



001 (R314)



000 (R313)

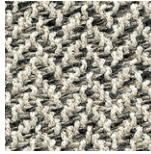


●●● MONACO\*

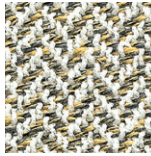
060 (R320)



040 (R319)



014 (R318)

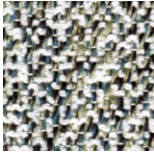


●●● DUNE

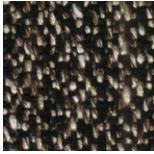
039 (R361)



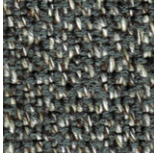
034 (R359)



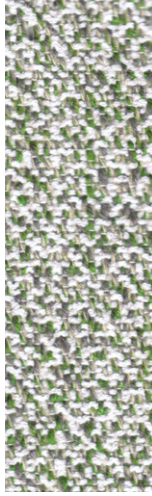
010 (R358)



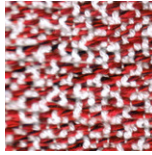
000 (R357)



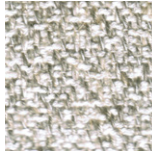
043 (R362)



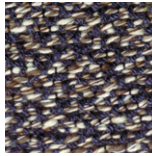
035 (R360)



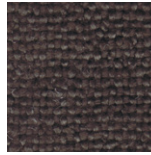
103 (R364)



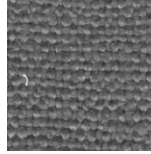
050 (R363)



443 (R368)



168 (R367)



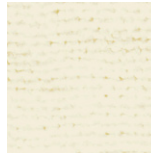
445 (R370)



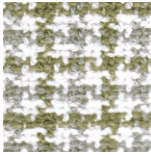
444 (R369)



001 (R366)



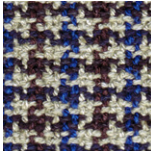
080 (R375)



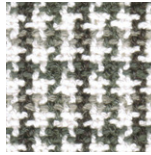
051 (R373)



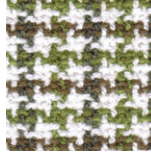
004 (R371)



091 (R376)



072 (R374)



005 (R372)



●●● WILLIAM\*

166 (R366)



●●● MENFI

\*ONLY CUSHION

watch the video



<https://youtu.be/LbWYF1KAumM>

**concept - style and coordination**

Marketing MDF Italia and Francesco Bettoni

**graphic layout** Giovanna Baderna

**photo** Studio Controluce, Lorenzo Cappellini Baio

**printing** A.G. Bellavite srl • Missaglia (Lc)

September 2014

**[www.mdfitalia.it](http://www.mdfitalia.it)**

for technical specs of the products

we invite you to visit our website

© Copyright 2016 MDF Italia srl

Società Unipersonale all rights reserved

MDF Italia reserves the right to change,  
at any time and without prior warning,  
the technical specifications of  
any product illustrated in this catalogue.

**MDF ITALIA srl**

**Società Unipersonale**

**HEADQUARTER**

Via Fratelli Cervi 4/A

22066 Mariano Comense (CO)

0039 031 7570301

**SHOWROOM MILANO**

via della chiusa

0039 02 58 317168

[info@mdfitalia.it](mailto:info@mdfitalia.it)

[www.mdfitalia.it](http://www.mdfitalia.it)